

Kässbohrer

Driven by professionals®

Application Description

for the

Loading examples catalog

Version 2.0

created: 2017-02-09

Table of content

1	Foreword	3
2	System requirements	3
2.1	Connection.....	3
2.2	Firewall.....	3
2.3	Java.....	3
2.4	Optimized screen display.....	4
3	User name and login.....	4
3.1	How to receive a user name and a password	4
3.2	Login.....	5
4	Initial screen	6
4.1	The main menu bar	6
4.1.1	Catalog	6
4.1.2	Settings	6
4.1.3	Logout	7
5	Navigation and displays	8
5.1	Navigation with the tree structure	8
5.2	Displaying the loading designs.....	9
5.2.1	Additional information.....	9
5.3	Print a loading design	10
6	Documentation	11
7	Quick search.....	12
7.1	Search logics.....	13
7.2	Additional search results	15

1 Foreword

Fast access to loading examples for Kässbohrer car carriers is our non-binding but valuable utility to achieve correct load layouts. You can also draw helpful conclusions for similar loading situation.

2 System requirements

2.1 Connection

You need a permanent Internet connection to be able to access the loading examples catalog. The actual bandwidth of your connection will mainly influence the speed of working with this application.

2.2 Firewall

Your company's local area network will probably be protected by a firewall. After you have logged into this application (see chapter 3), the input field for a chassis ID number will be displayed – as long as your firewall permits the access to our web site (http://85.10.194.88:8080/kaessbohrer_shop). If access is denied at this stage, please contact our own IT department for help. In most cases, this internet address must be authorized for your firewall, or other firewall settings must be altered. If you still can not get access to our web site, please contact our service department.

2.3 Java

Kässbohrer recommends the use of the most recent JAVA script application. Using an outdated JAVA script version will endanger your own system and may lead to problems when displaying catalog details. Please visit the ORACLE JAVA web site for JAVA script updates.

2.4 Optimized screen display

In order to use your monitor perfectly with the loading examples catalog, press keyboard key **F11** to optimize the display. Press keyboard key **F11** again in order to return to your usual display setting.

3 User name and login

3.1 How to receive a user name and a password

You need a personal user name and password to use this application. Please contact the address below to get your data from Kässbohrer. You will receive a code card with user name and password to enable your access from any internet access device to the catalog within our web site.



Illustration 1: Example of a code card

Administration and issuing of user names and passwords:

Kässbohrer Transport Technik GmbH

Servicecenter

Mr. Andreas Danninger

E-mail: andreas.danninger@kaessbohrer.at

Phone: +43 6225 28100 212

Mr. Alexander Lorenz

alexander.lorenz@kaessbohrer.at

+43 6225 28100 322

Attention: Make sure to safeguard your user names and passwords in order to avoid any misuse. Also observe our Terms of Use).

3.2 Login

First select your preferred language from the navigation column, then select “Login – Loading examples”.

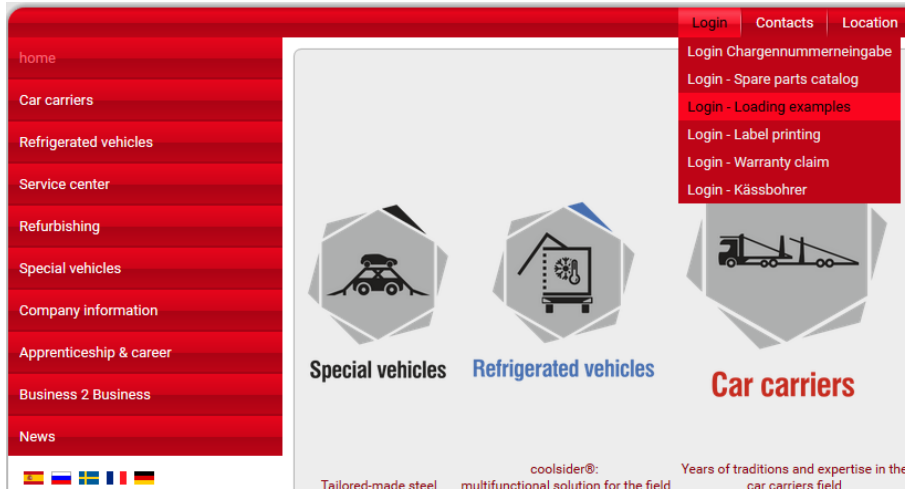


Illustration 2: The Kässbohrer initial page

The login page will appear. Please enter your login data form your code card, then press button “Log in”.

Illustration 2: The login screen

After successful login the initial page of the loading database will be displayed. Make sure to click on button “Logout” whenever you want to leave the application.

4 Initial screen

4.1 The main menu bar

The initial screen displays 3 main items: **catalog**, **Settings**, **Logout**.

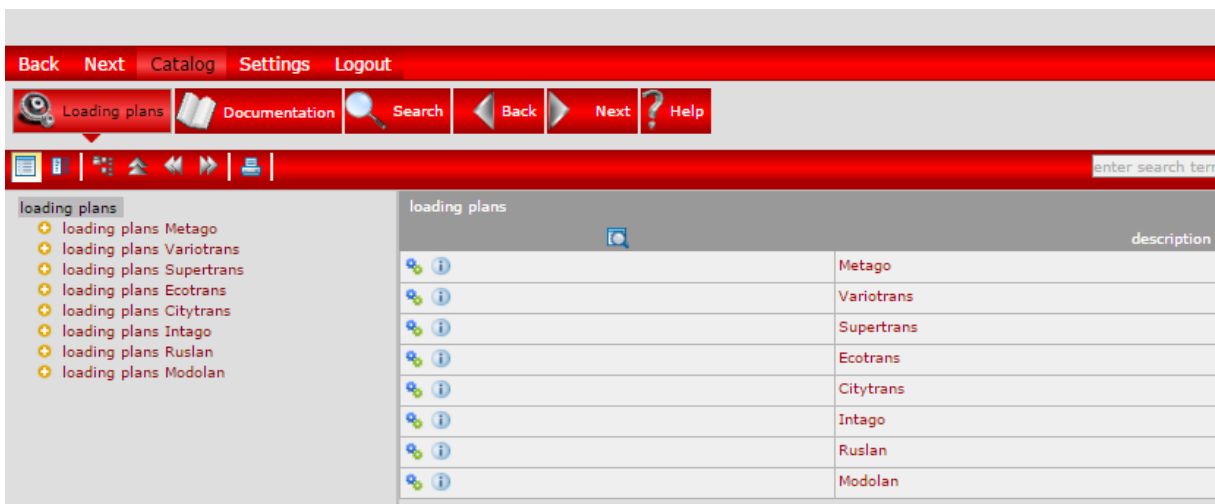


Illustration 3: Initial screen after login

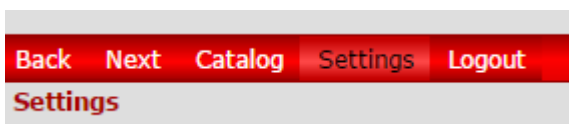
4.1.1 Catalog

Select field “Catalog” to display the additional menu bar:



For more details on the loading database see chapter 5: Navigation.

4.1.2 Settings



This screen offers user-defined settings. We recommend however to keep the default settings and only to choose your desired **language**, as other changes may cause problems when displaying the loading database examples. After you have entered your changes, please click on “OK” to save these changes and to reload the

“Catalog” page or click on “Close” to discard the changes and to reload the “Catalog” page.

Property	Value	Inherited
Type of Viewer	Java	<input checked="" type="checkbox"/>
Rows per page (in lists)	10	<input checked="" type="checkbox"/>
Viewer Language (Language, Country)	English, England	<input type="checkbox"/>
Part Language	English	<input type="checkbox"/>
Documentation Language	English	<input type="checkbox"/>
Vertical Alignment of Image and Partlist	<input checked="" type="checkbox"/>	<input checked="" type="checkbox"/>
Currency	EUR	<input checked="" type="checkbox"/>
Currency key	DE	<input checked="" type="checkbox"/>

Illustration 4: User defined settings

4.1.3 Logout

Confirm logout

You are about to be logged out.

Select this item to logout from the application. You need to acknowledge your input with button “OK” or return to the application by selecting “Cancel”.

5 Navigation and displays

5.1 Navigation with the tree structure

The tree structure of the content will be displayed at the left side of the screen. The loading examples catalog has a 4 – level structure:

- Level 1 Main node for loading designs
- Level 2 Node for car carrier types
- Level 3 Node for distinguishing between trucks and trailers
- Level 4 Loading designs with different types loaded vehicles

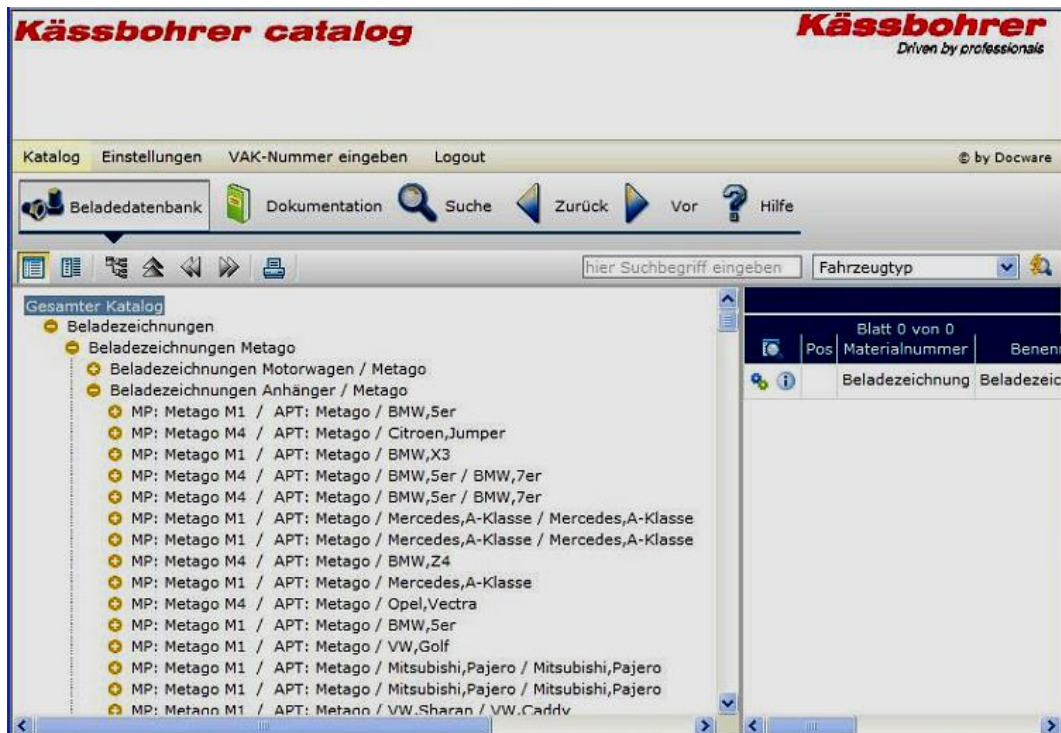


Illustration 5: Tree structure with 4 levels

Use the mouse and buttons **+** and **-** to navigate within the levels.

5.2 Displaying the loading designs

All the single loading designs are stored on level 4 of the catalog. When selecting the desired line in the tree structure on the left side of, the right side window will display the loading design. Further information on the loaded vehicles (dimensions) will also be displayed.

Structure of the lines on the left side (level 4):

MP = type of Kässbohrer truck / APT = type of Kässbohrer trailer / brands, models of all vehicles shown in this loading design.

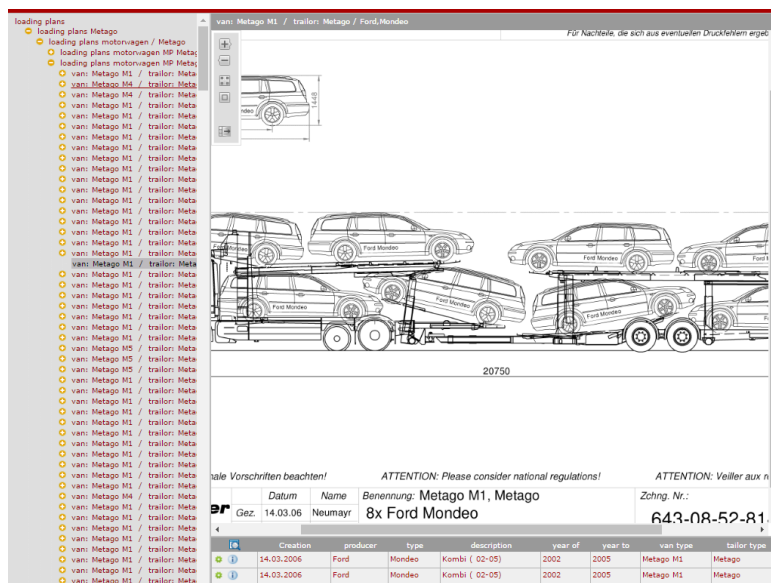




Illustration 6: Selected loading design (label and illustration)

5.2.1 Additional information

Underneath the illustration on the right side you see a list of all vehicles loaded in this example. Click on the   symbol to get a popup window with more information on a certain vehicle (dimensions) and to the individual equipment of this car carrier (types of platforms, pans, hydraulic devices).

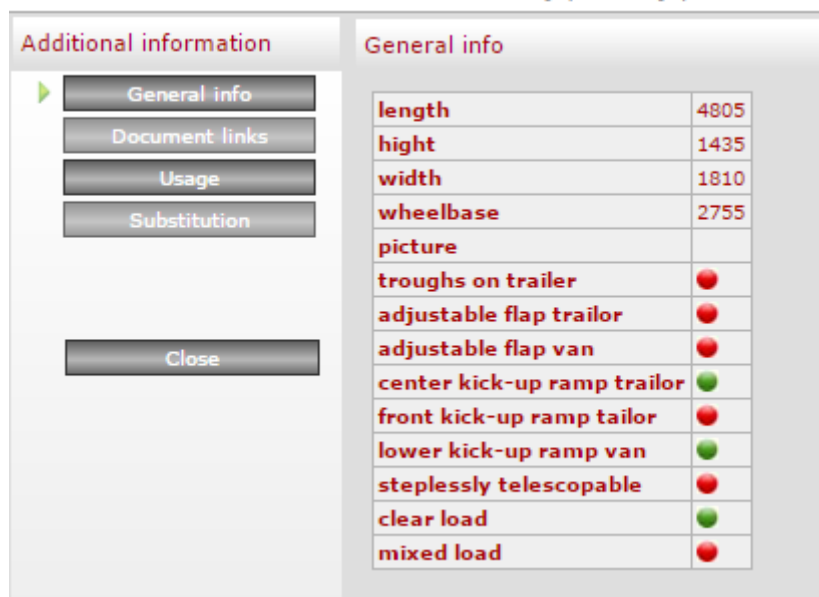


Illustration 7: Additional information on the loaded vehicle, on the loading situation (one or several vehicle types) and car carrier equipment

To get a larger view of the illustration you may minimize the tree structure window by clicking on the tree structure symbol (blue frame below). Restore the tree structure by clicking on the symbol again.



Illustration 8: Reduce / restore the tree structure display

5.3 Print a loading design

To print the currently displayed loading design, you click on the printer symbol (blue frame below). A dialog window will pop up where you select whether you want to print the illustration or the parts list or both.



Illustration 9: Print an illustration / a parts list



Illustration 10: Select the document type

6 Documentation

Select tab “Documentation” to access all official documents like product folders, specifications concerning integrated components, Kässbohrer General Terms of Delivery, installation instructions and more.



7 Quick search

You may search loading examples by entering certain criteria. Select tab “Search” to display the search dialog window:

Illustration 11: Search dialog window

These are the available search criteria:

Vehicle manufacturer	The selection list will show all vehicle manufacturers whose vehicles appear at least in one loading design. Example: Select “ Audi ”.
Vehicle type	Here you enter the vehicle type of the selected brand. Example: Select “Audi” in the manufacturer field and enter “ A4 ” in the type field.
Vehicle description	Here you enter an extended description of the selected brand and type. Example: Enter “ Avant ” here to find the estate car model of Audi A4.
MP type (truck)	The selection list will show all Kässbohrer truck types which are included in the loading examples catalog.
APT type (trailer)	The selection list will show all Kässbohrer trailer types which are included in the loading examples catalog.

Attention – Important!

In order to speed up your search you must select “**loading examples**” instead of “**complete catalog**”.

Illustration 12: Select a search area

7.1 Search logics

Multiple selection and joint search (“or” logics) are available for these fields: Vehicle manufacturer, MP type (truck), APT type (trailer).

Example: By selecting manufacturers Audi and BMW, a list of loading examples with Audi or BMW cars will result.

Unique selection and straight search are available for these fields: Vehicle type, vehicle description. You can not enter more than one vehicle type and more than one vehicle description (impossible: A4 and A6, estate car and notchback).

If you have made selections in more than one search field, only those loading examples will be listed which match all search criteria.

Search example:

The screenshot shows a search interface with a navigation bar at the top containing 'Loading plans', 'Documentation', 'Search', 'Back', 'Next', and 'Help'. Below the navigation bar is a search form with the following fields:

- Search in catalogue: []
- Producer: Mercedes
- Typ: []
- Description: []
- van type: Metago
- trailer typ: Supertrans
- Search in: loading plans

Buttons for 'Start search', 'Cancel search', and 'Clear search fields' are located below the form. Below the buttons is a pagination bar showing 'Record 1 to 10 from 271 is shown'.

	Creation	Producer	typ car	description	foto	year of	year to	van type
⊕	22.07.2013	Mercedes	S-Klasse	Limousine lang (ab13)		2013	9999	Metago Pro
⊕	22.07.2013	Mercedes	E-Klasse	Limousine (ab 13)		2013	9999	Metago Pro
⊕	22.07.2013	Mercedes	S-Klasse	Limousine lang (ab13)		2013	9999	Metago Pro
⊕	22.07.2013	Mercedes	E-Klasse T	Kombi (ab 13)		2013	9999	Metago Pro
⊕	12.05.2016	Mercedes	C-Klasse	Limousine (ab13)		2013	9999	Metago M1 Pro
⊕	12.05.2016	Mercedes	E-Klasse	Limousine (ab 13)		2013	9999	Metago M1 Pro
⊕	12.05.2016	Mercedes	A-Klasse	Kleinwagen (ab 12)		2012	9999	Metago M1 Pro
⊕	12.05.2016	Mercedes	C-Klasse	Limousine (ab13)		2013	9999	Metago M1 Pro Hochdac
⊕	14.03.2016	Mercedes	A-Klasse	Kleinwagen (ab 12)		2012	9999	Metago M1 Pro
⊕	14.03.2016	Mercedes	C-Klasse	Limousine (ab13)		2013	9999	Metago M1 Pro



Illustration 13: Example of a search result

Search criteria were vehicle manufacturers “**Mercedes**” and “**Fiat**” and truck type “**Metago**”.

The search produces a list with all Daewoo cars on Metago trucks and with all Fiat cars on Metago trucks, no matter what Daewoo and Fiat types and what Kässbohrer trailer types.

7.2 Additional search results

Apart from the describing information of a search run, further graphic information on the specific loading situation are displayed, as well as on the individual equipment of the selected car carrier.

Applied marks:		yes, criterium applies
		not applicable
Load situations:	Unique load	in this example all loaded vehicles are of the same brand and type
	Mixed load	various brands / types of vehicles are included in this example
Car carrier equipment:	Pans HG	Trailer is equipped with platform pans
	Movable flaps HG	Flaps at the trailer's upper platform can be tilted
	Movable flaps MW	Flaps at the truck's upper platform can be tilted
	Kick-up ramp center HG	Hydraulic kick-up ramp installed at the center of the trailer
	Kick-up ramp front HG	Hydraulic kick-up ramp installed at the front of the trailer
	Kick-up ramp bottom MW	Hydraulic kick-up ramp installed at the rear of the truck
	Telesc. drawbar	Telescopic drawbar on the trailer